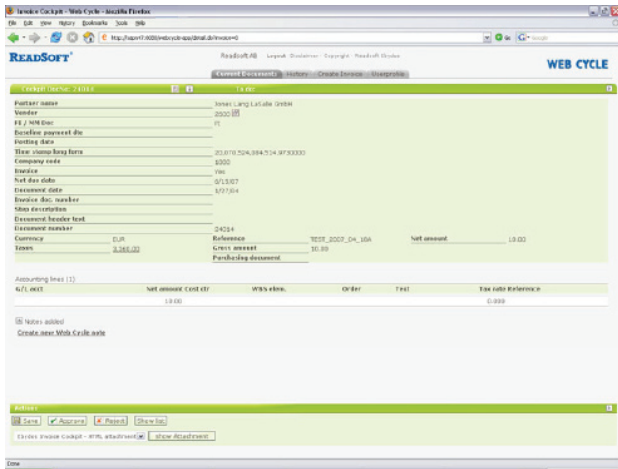


An electronic workflow for processing invoices in SAP®

WEB CYCLE takes over after ReadSoft's INVOICE COCKPIT has verified your incoming invoices in SAP®. The invoices are routed to the correct people who can approve them or pass them on for further processing.

SAP® users can handle exceptions, coding, and invoice approval inside their familiar SAP® environment. WEB CYCLE uses your existing SAP® system which means that users can work in an environment they know well.

Users can also connect via a Web browser and approve invoices wherever they are. This means no more bottlenecks when people are out of the office.



When an invoice needs attention, the user receives an email with a link to this Web interface where they can easily approve the invoice, or forward it for further processing.

Suitable for you if:

You are an SAP user wanting to speed up your invoice processing.

With WEB CYCLE, you will:

Speed up invoice processing



Electronic approval is much faster than manual processing.

Get faster and more accurate payments



This enables you to negotiate better discounts from your suppliers

Improve control over your invoice process



You can always see where invoices are in the flow.

Get a smooth workflow



No more bottlenecks just because people are out of the office

Technical capabilities

- Quickly obtain all information on release and account assignments.
- Easily clarify discrepancies between an invoice and the goods received.
- Check price deviations.
- Effectively integrate people into the process via a Web browser.
- Use the SAP® Business Workflow whenever it is needed.
- Keep all data within SAP®.

Business system integration

WEB CYCLE is a part of ReadSoft's invoice processing solution for SAP which works seamlessly inside SAP.



WEB CYCLE: Hard Facts

ReadSoft SAP Products

- INVOICE COCKPIT
- WEB BOARD
- EDI COCKPIT
- INFO MAIL
- WEB CYCLE
- PROCESS DIRECTOR
- MOBILE APPROVAL

INVOICE COCKPIT, EDI COCKPIT, PROCESS DIRECTOR and WEB CYCLE are run in SAP.

WEB BOARD, INFO MAIL, and MOBILE APPROVAL are web applications in connection with the SAP system (where the configuration takes place). WEB CYCLE and PROCESS DIRECTOR also have web interfaces.

Graphical user interface localization

- Czech
- German
- Polish
- Spanish
- Dutch
- Hungarian
- Portuguese
- Swedish
- English
- Italian
- Romanian
- French
- Japanese
- Slovenian

Relevant SAP releases

- SAP R/3 Release 4.6C
- SAP R/3 Enterprise 4.7
- SAP ECC 5.0 (also known as mySAP ERP 2004)
- SAP ERP 6.0 (also known as mySAP ERP 2005)



Web Application server requirements

Java versions

- Java Runtime 5
- Java Runtime 6

Web application server – 100% J2EE compatible with:

- Java Servlet 2.4
- Java Server Pages JSP 2.0
- SAP Java Connector (JCO 2.0.10 or later)

Recommended servers

- Apache Tomcat 5.5.x
- SAP NetWeaver 7.1 Application Server Java

Recommended operating systems

- Microsoft Windows 2000
- Microsoft Windows XP
- Microsoft Windows 2003 Server

Processor speed

- 2.0 GHz or faster

Memory

- 1 GB RAM or more

For a high number of users working in parallel, we recommend a minimum of 2 GB RAM.

Hard drive

- 10 - 20 GB of free space

Related products

INVOICES